

HTD

BIOSYSTEMS INC.

High Throughput Development



High Throughput SDS-PAGE analysis

Protein Chip™ Bioanalyzer

Principle:

The method is based on capillary electrophoresis using a fluorescent dye that binds to SDS-protein molecules. The intensity of the signal and migration time is proportional to the concentration and molecular size of the proteins, respectively.

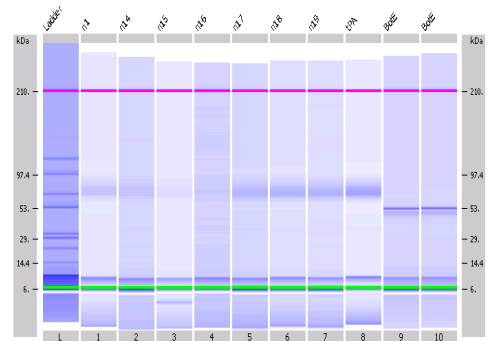
Determination of protein stability

- Purity
- Size
- Protein content
- Protein integrity/aggregation

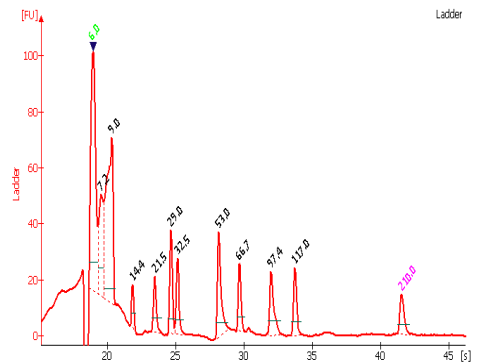
Advantages

- Small sample (4 μ l)
- Wide sample conc. range (50 – 2000 μ g/ml)
- Large number of samples: 10 samples/chip
- Rapid assay (45 min / chip)
- i.e. 10 samples analyzed in < 1hour)
- Online analysis of sample electropherogram
- Equal or better sensitivity than SDS-PAGE

(Traditional SDS-PAGE : 2 days/10 samples using multiple processing steps)



Gel-like image of the samples



Electropherogram of the ladder